

AAMI

CRES
Certified Radiology Equipment Specialist

Questions And Answers PDF Format:

For More Information – Visit link below:
<https://www.certsgrade.com/>

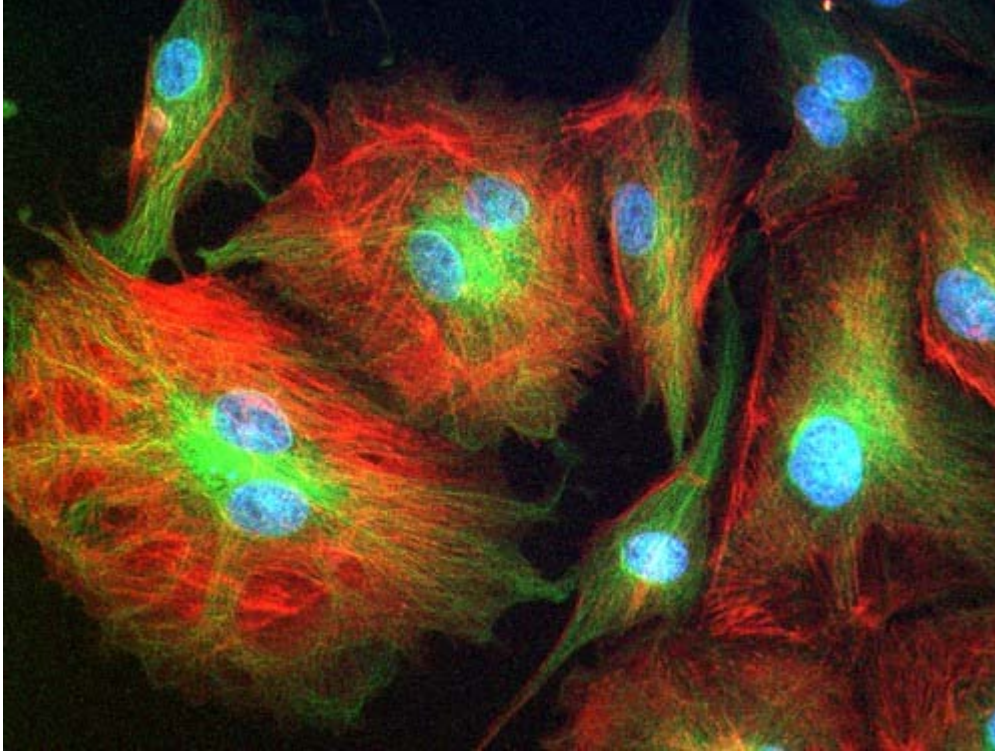
Version = Product



Latest Version: 6.0

Question: 1

chemical compound that absorb/emit light of specific wavelengths; they are used to stain tissues, cells, or materials in a variety of analytical methods



- A. cyclotron
- B. fluorophores
- C. electron microscopy
- D. pixel

Answer: B

Question: 2

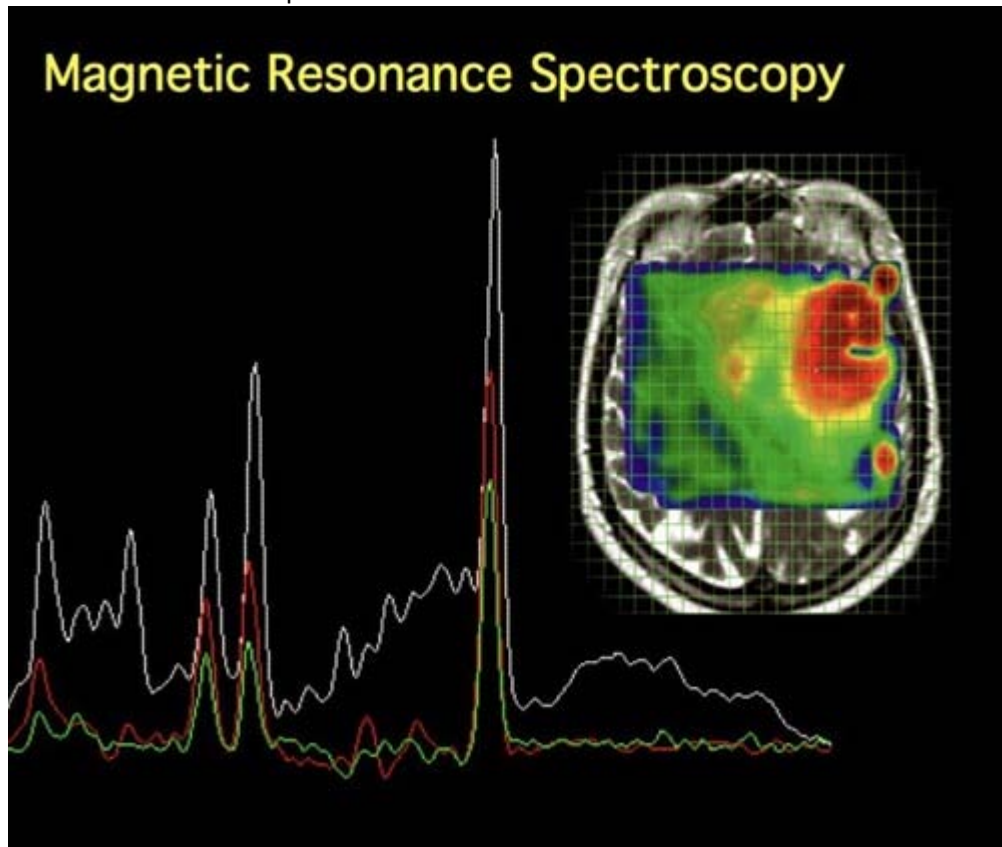
A device used to accelerate charged particles used to produce the isotopes used in PET imaging

- A. cyclotron
- B. radioactive molecule
- C. fluorophores
- D. confocal imaging

Answer: A

Question: 3

similar to MRI but is a technique that uses the magnetic properties of cell nuclei to gain information about the biochemical qualities of the brain



- A. MRIs (magnetic resonance imaging)
- B. fMRIs (functional magnetic resonance imaging)
- C. MRS (magnetic resonance spectroscopy)
- D. PET (positron emission tomography) imaging

Answer: C

Question: 4

to help

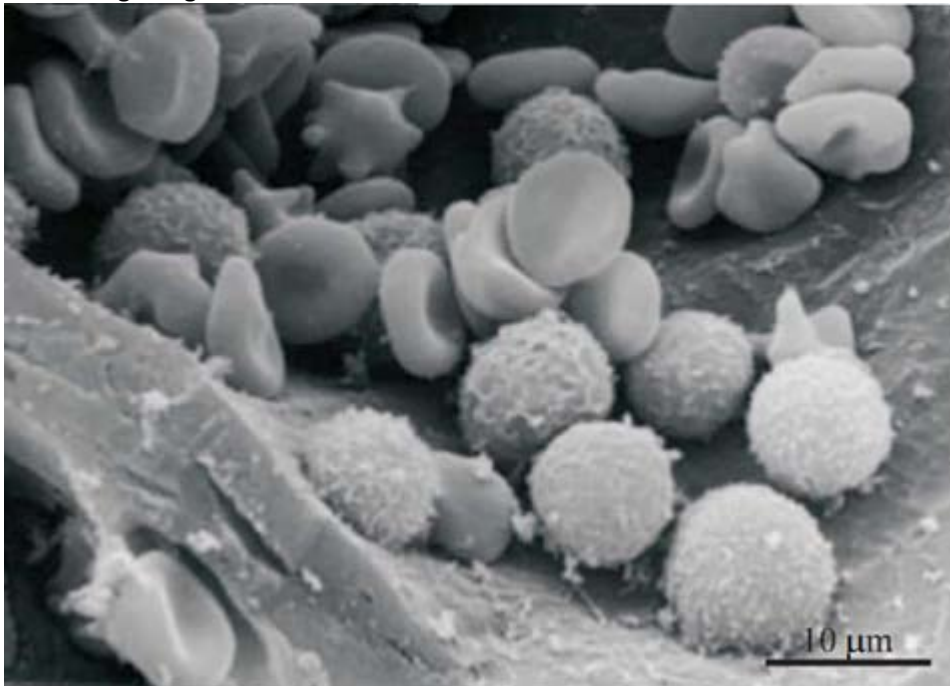
- A. pixel

- B. pet (positron emission tomography) imaging
- C. aid
- D. fmris (functional magnetic resonance imaging)

Answer: C

Question: 5

uses electrons instead of light to create pictures of very small objects; the shorter wavelength of electrons gives greater resolution



2

- A. fluorophores
- B. electron microscopy
- C. cyclotron
- D. fluorophores

Answer: B

Question: 6

in place of, rather than

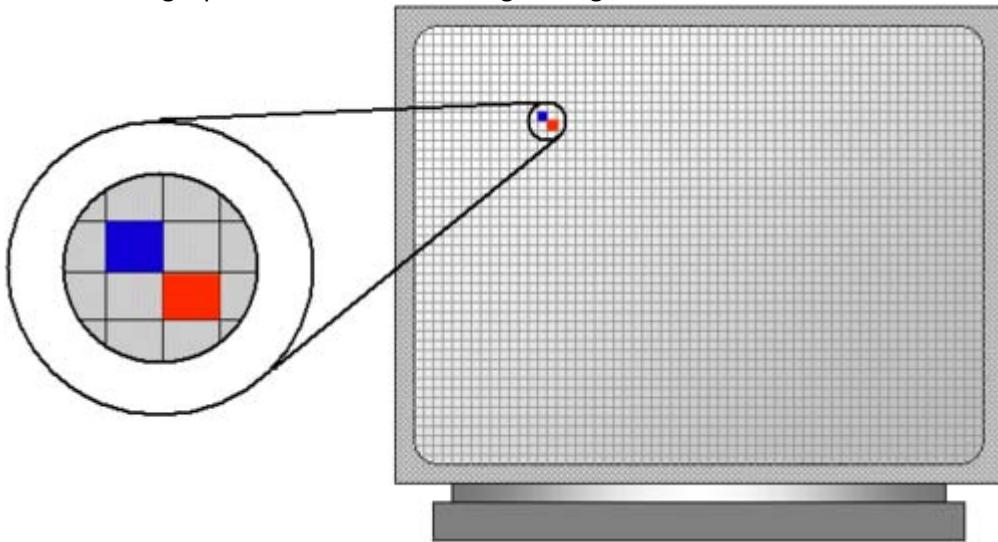
- A. digital camera
- B. confocal imaging
- C. instead of

D. modality

Answer: C

Question: 7

Short for "picture element" is the smallest unit of a digital image; typically a tiny square or dot which contains a single point of the color of a larger image.



- A. fluorophores
- B. pixel
- C. digital camera
- D. gamma camera

Answer: B

Question: 8

if an image is DIGITAL, it is produced by a computer and made up of pixels



- A. digital camera
- B. cyclotron
- C. gamma camera
- D. pixel

Answer: A

Question: 9

is a technique that creates three-dimensional images of the body, usually by detecting radioactive molecules introduced into the bloodstream



- A. PET (positron emission tomography) imaging
- B. fMRIs (functional magnetic resonance imaging)
- C. SPECT (single photon emission computed tomography)
- D. MRIs (magnetic resonance imaging)

Answer: C

Question: 10

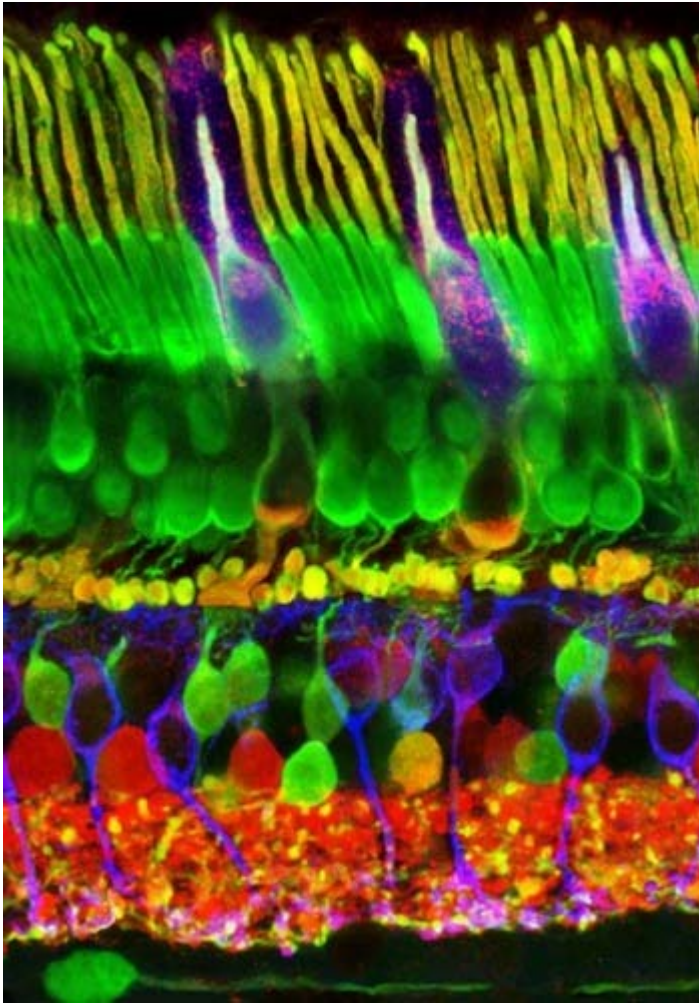
a pattern or symptom that aids in medical diagnosis

- A. cyclotron
- B. modality
- C. radioactive molecule
- D. confocal imaging

Answer: B

Question: 11

is a type of microscopy that uses a pinhole technique to create high resolution images.



- A. digital camera
- B. confocal imaging
- C. cyclotron
- D. mris (magnetic resonance imaging)

Answer: B

Question: 12

Certified Radiology Equipment Specialist

- A. FLUOROPHORES
- B. CRES
- C. PIXEL
- D. ELECTRON MICROSCOPY

Answer: B

Question: 13

a device that produces images by reading radioactive substances injected into the body



- A. gamma camera
- B. confocal imaging
- C. digital camera
- D. pixel

Answer: A

Question: 14

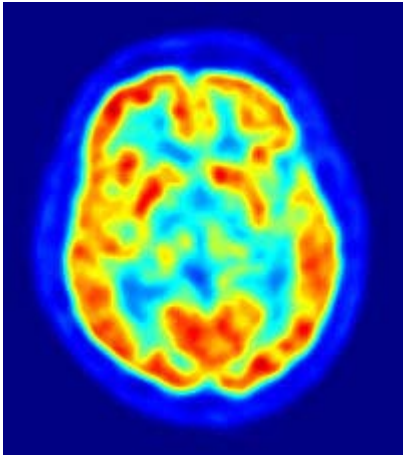
is an unstable molecule that releases radiation when it spontaneously decays

- A. gamma camera
- B. radioactive molecule
- C. cyclotron
- D. fluorophores

Answer: B

Question: 15

is a technique that creates three-dimensional images of the body by detecting radioactive molecules that have been introduced in the body











- A. MRIs (magnetic resonance imaging)
- B. SPECT (single photon emission computed tomography)
- C. Fmris (functional magnetic resonance imaging)
- D. PET (positron emission tomography) imaging

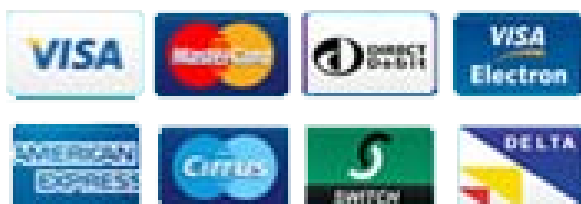
Answer: D

For More Information – **Visit link below:**
<https://www.certsgrade.com/>

PRODUCT FEATURES

-  **100% Money Back Guarantee**
-  **90 Days Free updates**
-  **Special Discounts on Bulk Orders**
-  **Guaranteed Success**
-  **50,000 Satisfied Customers**
-  **100% Secure Shopping**
-  **Privacy Policy**
-  **Refund Policy**

16 USD Discount Coupon Code: **NB4XKTMZ**



Visit us at <https://www.certsgrade.com/pdf/cres/>