

Fortinet

NSE6_FML-7.2

Fortinet NSE 6 - FortiMail 7.2

Questions And Answers PDF Format:

For More Information – Visit link below:
<https://www.certsgrade.com/>

Version = Product



Latest Version: 6.0

Question: 1

Refer to the exhibits showing SMTP limits (Session Profile — SMTP Limits), and domain settings (Domain Settings, and Domain Settings — Other) of a FortiMail device.


Session Profile—SMTP Limits

Session Profile

Profile name

Example_Session

Comment

 **SMTP Limits**

Restrict number of EHLO/HELOs per session to

3

Restrict number of email per session to

10

Restrict number of recipients per email to

500

Cap message size (KB) at

51200

Cap header size (KB) at

10240

Maximum number of NOOPs allowed for each connection

10

Maximum number of RSETs allowed for each connection

20

Domain Settings

FortiMail

| | | | |
|----------------------|--|------|---|
| Domain name | <input type="text" value="example.com"/> | | |
| Relay type | <input type="text" value="Host"/> | | |
| SMTP server | <input type="text" value="10.29.1.45"/> | Port | <input type="text" value="25"/> [Test...] |
| | <input type="checkbox"/> Use SMTPS | | |
| Fallback SMTP server | <input type="text"/> | Port | <input type="text" value="25"/> [Test...] |
| | <input type="checkbox"/> Use SMTPS | | |
| | <input checked="" type="checkbox"/> Relay Authentication | | |

Domain Settings—Other

| | |
|---|---|
| Other | |
| Webmail theme | <input type="text" value="Use system settings"/> |
| Webmail language | <input type="text" value="--Default--"/> |
| Maximum message size (KB) | <input type="text" value="204800"/> |
| SMTP greeting (EHLO/HELO) name (as client) | <input type="text" value="Use system host name"/> |
| IP pool | <input type="text" value="--None--"/> Direction <input type="text" value="Delivering"/> |
| <input type="checkbox"/> Remove received header of outgoing email | |
| <input checked="" type="checkbox"/> Use global bayesian database | |
| <input type="checkbox"/> Bypass bounce verification | |
| <input checked="" type="checkbox"/> Email continuity | |

Which message size limit in KB will the FortiMail apply to outbound email?

- A. 204300
- B. There is no message size limit for outbound email from a protected domain.
- C. 10240
- D. 51200

Answer: D

Question: 2

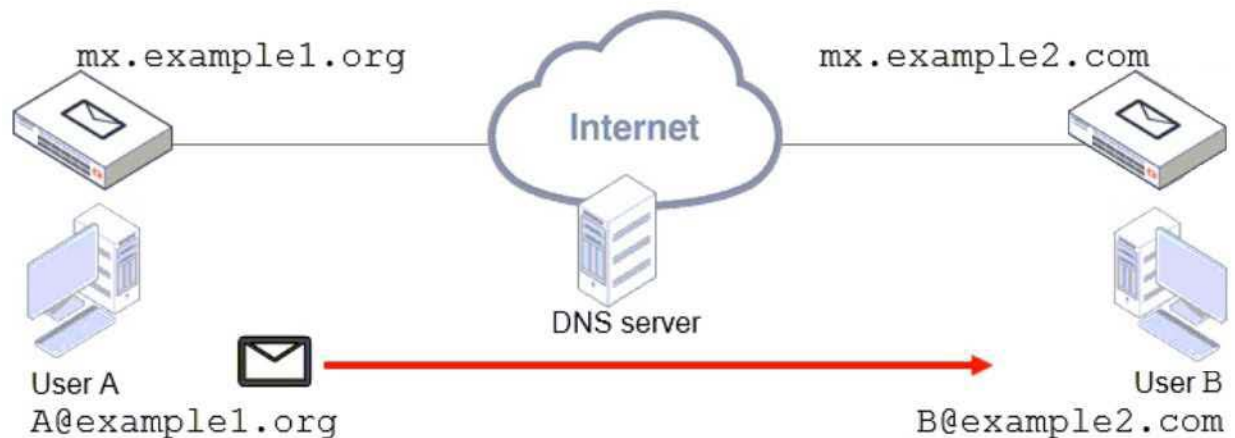
A FortiMail device is configured with the protected domain example.com. If none of the senders is authenticated, which two envelope addresses will require an access receive rule? (Choose two.)

- A. MAIL FROM: support@example.org RCPT TO: marketing@example.com
- B. MAIL FROM: mis@hosted.net RCPT TO: noc@example.com
- C. MAIL FROM: accounts@example.com RCPT TO: sales@biz.example.com
- D. MAIL FROM: training@example.com RCPT TO: students@external.org

Answer: A, B

Question: 3

Refer to the exhibit, which shows a topology diagram of two separate email domains.



Which two statements correctly describe how an email message is delivered from User A to User B? (Choose two.)

- A. mx.example1.org will forward the email message to the MX record that has the lowest preference.
- B. User B will retrieve the email message using either POP3 or IMAP.
- C. User A's MUA will perform a DNS MX record lookup to send the email message.

D. The DNS server will act as an intermediary MTA.

Answer: A, B

Question: 4

Refer to the exhibit which shows the output of an email transmission using a telnet session.

```
220 mx.internal.lab ESMTP Smtpd
EHLO 10.0.1.10
250-mx.internal.lab Hello [10.0.1.10]
250-SIZE 10485760
250-DSN
250-AUTH LOGIN PLAIN DIGEST-MD5 CRAM-MD5
MAIL FROM: <extuser@external.lab>
250 2.1.0 <extuser@external.lab>... Sender ok
RCPT TO: <user1@internal.lab>
250 2.1.5 <user1@internal.lab>... Recipient ok
DATA
354 Enter mail, end with "." on a line by itself
From: External User 1 <extuser@external.lab>
To: Mail User 1 <user1@internal.lab>
Date: 30 Jun 2021 12:24:54 +0100
Subject: Hello, World!
The quick brown fox jumped over the lazy dog.
.
250 Message accepted for delivery
QUIT
221 mx.internal.lab closing connection
```

What are two correct observations about this SMTP session? (Choose two.)

- A. The SMTP envelope addresses are different from the message header addresses.
- B. The "250 Message accepted for delivery" message is part of the message body.
- C. The "Subject" is part of the message header.
- D. The "220 mx.internal.lab ESMTP Smtpd" message is part of the SMTP banner.

Answer: C, D

Question: 5

Which two features are available when you enable HA centralized monitoring on FortiMail? (Choose two.)

- A. Policy configuration changes of all cluster members from the primary device.
- B. Mail statistics of all cluster members on the primary device.
- C. Cross-device log searches across all cluster members from the primary device.
- D. Firmware update of all cluster members from the primary device

Answer: B, C

For More Information – **Visit link below:**
<https://www.certsgrade.com/>

PRODUCT FEATURES

-  **100% Money Back Guarantee**
-  **90 Days Free updates**
-  **Special Discounts on Bulk Orders**
-  **Guaranteed Success**
-  **50,000 Satisfied Customers**
-  **100% Secure Shopping**
-  **Privacy Policy**
-  **Refund Policy**

16 USD Discount Coupon Code: NB4XKTMZ

