

Medical Tests

NHA-CET

National Healthcareer Association: Certified EKG Technician

Questions And Answers PDF Format:

**For More Information – Visit link below:
<https://www.certsgrade.com/>**

Version = Product



Latest Version: 6.0

Question: 1

During a patient assessment, their pulse is full, bounding, and rapid. What does this finding indicate?

- A. Heart failure
- B. Sepsis
- C. Shock
- D. Normal finding

Answer: A

Explanation:

A full, bounding pulse that is racing indicates an abnormality of the heart (e.g., aortic insufficiency, abnormal rhythm, or heart failure), especially in patients who feel symptomatic. Sepsis and shock cause severely low blood pressure and will present with a weak, thready pulse.

Question: 2

What is the product of a patient's blood pressure multiplied by their heart rate?

- A. Double product
- B. Diffusion
- C. Cardiac output
- D. Stroke volume

Answer: A

Explanation:

The product of a patient's blood pressure multiplied by their heart rate is called a double product. It is a good measurement of myocardial oxygen consumption.

Stroke volume is the volume of blood pumped out of the left ventricle during each contraction. Cardiac output is the product of the heart rate and the stroke volume and is measured in liters per minute. Diffusion is the movement of a substance from a higher concentration to a lower concentration.

Question: 3

Which of the following is an example of maintaining a clean working environment?

- A. Cleaning the EKG machine once per week
- B. Leaving all the EKG printouts on the desk for the doctor to read
- C. Keeping the exam room floor clear of electrical cords

D. Leaving all the supplies out on the exam table

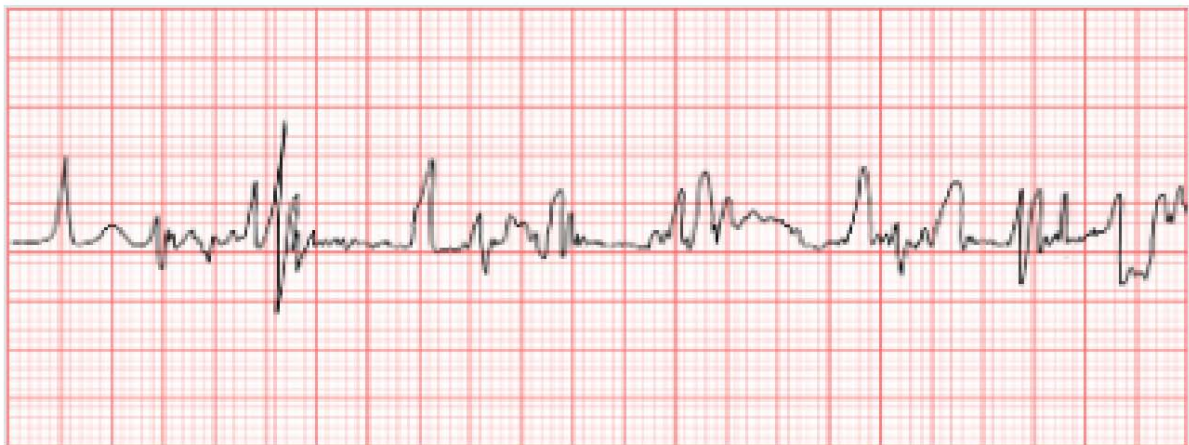
Answer: C

Explanation:

Keeping a clean working environment is important. Make sure the floor is clear of trash or electrical cords to prevent falls. Put away unused supplies in a cool, dry, area. Also, wipe down the EKG machine between patients and at the end of the day. EKG printouts belong in patient charts and should never be left out.

Question: 4

Identify the following artifact.

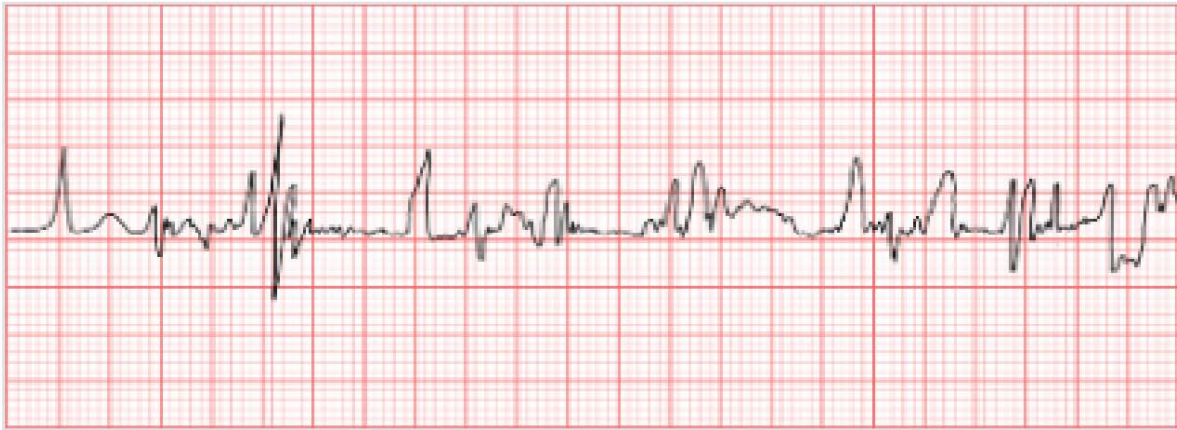


- A. Somatic tremor
- B. Broken recording
- C. Baseline sway
- D. 60-cycle interference

Answer: A

Explanation:

A somatic tremor is an artifact usually caused by movement. It can be mistaken for an atrial flutter if not examined closely. The artifact can be identified by the shakiness of the rhythm.



Question: 5

Where are the augmented leads placed?

- A. Right leg
- B. Chest
- C. Left arm
- D. First intercostal space, left sternal border

Answer: C

Explanation:

Augmented leads are placed on the left arm, right arm, and left leg.

The precordial leads are placed on the chest, including the first intercostal space. The right leg holds the grounding electrode.

Question: 6

Which of the following is not a correct action for following standard precautions?

- A. As long as your hands are not soiled, washing hands between patients is not necessary
- B. Using alcohol gel after removing gloves
- C. Cleaning the EKG machine between patient visits
- D. Washing hands between patient visits

Answer: A

Explanation:

Standard precautions are a universal measure to protect patients and healthcare staff from the risk of infection. Steps include using alcohol gel when you enter and exit the room, washing hands between

patient visits, washing hands when they are visibly soiled, using an alcohol-based gel when removing gloves, and cleaning the EKG machine after use.

Question: 7

What does HI stand for in regard to HIPAA?

- A. Health Information
- B. Head Injury
- C. Homicidal Ideation
- D. Hearing-Impaired

Answer: A

Explanation:

HI stands for health information in relation to HIPAA.

Question: 8

Which characteristic of cardiac cells is mechanical?

- A. Automaticity
- B. Conductivity
- C. Contractility
- D. Excitability

Answer: C

Explanation:

Contractility is the ability to contract the cardiac muscle. It is the mechanical characteristic of cardiac cells.

Automaticity is the cell's ability to create impulses without any outside stimulation. Conductivity is the ability to pass electrical impulses along neighboring cells. Excitability is the cell's ability to respond to electrical impulses through depolarization.

Question: 9

Where is lead aVL located?

- A. Right arm
- B. Right leg
- C. Left arm
- D. Left leg

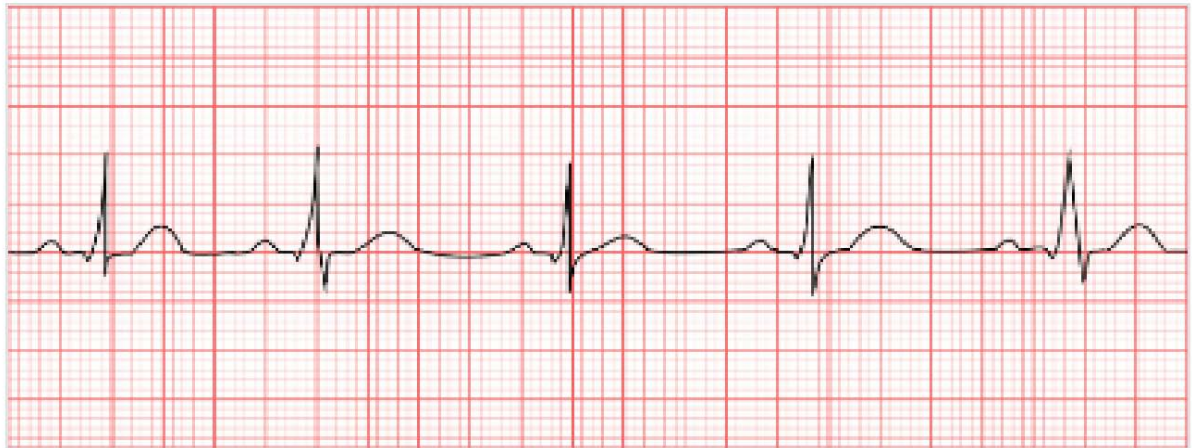
Answer: C

Explanation:

The aVL lead is placed on the left arm. "aV" stands for augmented voltage, and "L" is the left arm.

Question: 10

The horizontal axis on the EKG strip measures the amount of time during the cardiac cycle. Each square measures time. What is the distance across one small square?



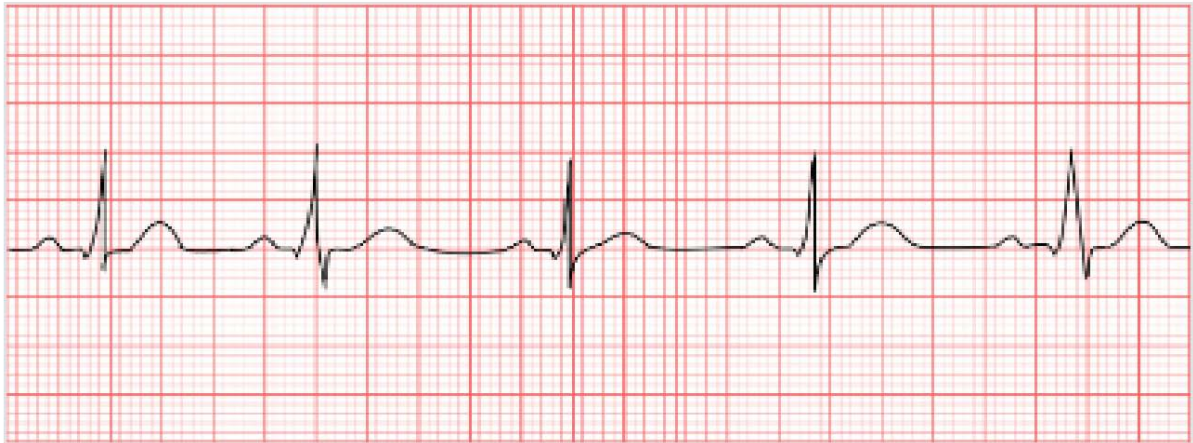
- A. 0.08 seconds
- B. 0.5 seconds
- C. 0.04 seconds
- D. 0.2 seconds

Answer: C

Explanation:

Each small square on the EKG strip represents 0.04 seconds. Each large square contains five small squares, which adds up to 0.2 seconds.

It is important to know these values by memory in order to calculate a heart rate on a rhythm strip quickly.



Question: 11

What part of the EKG symbolizes atrial depolarization?

- A. QRS complex
- B. T wave
- C. R wave
- D. P wave

Answer: D

Explanation:

The small burst of electrical activity that occurs during atrial depolarization is shown as the P wave on an EKG strip.

The R wave is the spike on the QRS complex and records early ventricular depolarization. The QRS complex records the entire pathway of ventricular depolarization. The T wave represents ventricular repolarization.

Question: 12

Which of the following actions is indicated when preparing a patient for a cardiac stress test?

- A. Advise patients with breasts to avoid wearing a tight bra
- B. Reassure the patient that there are no dietary restrictions for the test
- C. Tell the patient to pause all medications for the stress test
- D. Tape the EKG electrodes if necessary

Answer: D

Explanation:

The electrode patches can be taped to the skin to avoid removal during the test (e.g., due to sweat). Patients should be advised of the following prior to the test:

- Patients with breasts should wear a bra to avoid artifact. Loose, comfortable clothing is recommended.
- Continue medications unless advised differently by the physician
- Avoid eating a large meal for at least four hours prior to the test
- Avoid caffeinated beverages prior to the test

Question: 13

Which of the following is true regarding unifocal PVCs?

- A. Couplets are only seen in unifocal PVCs
- B. The PVCs are shaped the same
- C. Unifocal PVCs are irregular rhythms
- D. They originate from several foci

Answer: B

Explanation:

Unifocal PVCs originate from one irritable focus and, therefore, will look the same on the rhythm.

PVCs, both unifocal and multifocal, are regular but interrupted rhythms. Couplets, or two consecutive PVCs, can appear in unifocal and multifocal rhythms.

Question: 14

Baseline sway, a type of artifact, can be caused by which of the following?

- A. A patient experiencing tremors
- B. A patient breathing deeply
- C. A broken wire
- D. A patient using their phone

Answer: B

Explanation:

Baseline sways are related to a patient's breathing pattern.

Somatic tremors are caused by patient tremors or anything that shakes the electric wires. A 60-cycle interference is caused by electrical interference. A broken recording is caused by a frayed or broken wire.

Question: 15

Which of the following is true about the HIPAA Privacy Rule?

- A. The HIPAA Privacy Rule does not cover paper media because this is considered obsolete

-
- B. The HIPAA Privacy Rule extends to protected health information in all forms of media, including paper, electronic, and oral
 - C. The Privacy Rule does not apply to conversations between medical personnel
 - D. Because electronic information is considered secure, the Privacy Rule only applies to paper-based protected health information

Answer: B

Explanation:

The HIPAA Privacy Rule protects all kinds of protected health information, including those transmitted in paper, electronic, and oral form. It applies to conversations between medical employers, as all information must be shared privately.

For More Information – **Visit link below:**
<https://www.certsgrade.com/>

PRODUCT FEATURES

-  **100% Money Back Guarantee**
-  **90 Days Free updates**
-  **Special Discounts on Bulk Orders**
-  **Guaranteed Success**
-  **50,000 Satisfied Customers**
-  **100% Secure Shopping**
-  **Privacy Policy**
-  **Refund Policy**

16 USD Discount Coupon Code: **NB4XKTMZ**



Visit us at <https://www.certsgrade.com/pdf/nha-cet/>